

- Large screen for high-impact lessons
83-inch (UB-T880W) / 77-inch (UB-T880)
- Both finger-touch and Electronic Pen compatible
- Multi-touch operation
- Simultaneous operation of up to three points
- Built-in stereo speakers for effective lessons
- 2 USB hub ports
- Optional Wireless Kit

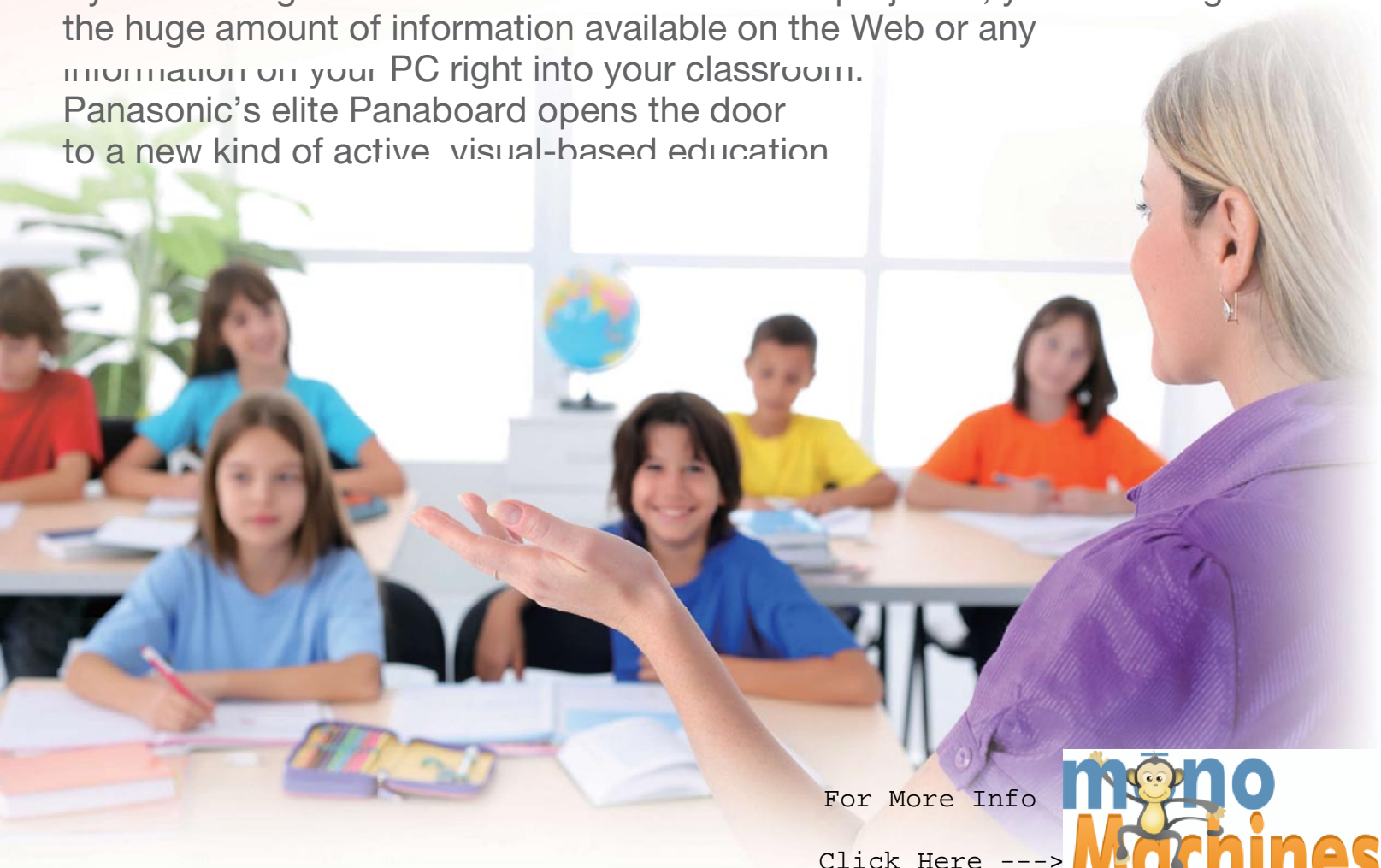
Interactive Whiteboard
UB-T880W/UB-T880

For More Info 
Click Here ---->

Panasonic ideas for life

Create a new type of lesson

The elite Panaboard is an advanced educational tool that helps you grab students' attention. It makes it easy to create effective, eye-catching teaching materials and it promotes active, visual-based teaching and learning that make the classroom fun for both teacher and students. By connecting a PC with Internet access and a projector, you can bring the huge amount of information available on the Web or any information on your PC right into your classroom. Panasonic's elite Panaboard opens the door to a new kind of active visual-based education



For More Info

Click Here --->

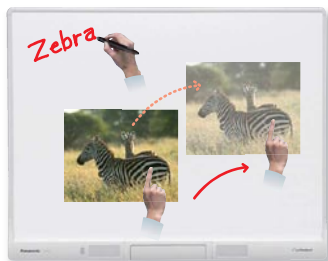


Operate with a Finger or the Electronic Pen

Seamless "Drawing and Controlling"

All board operations can be performed with the touch of a finger, and your finger's movement is relayed directly to the board surface for smooth, comfortable operation. Or you can use the handy Electronic Pen for writing characters and drawing lines. This enables seamless drawing and object operation.

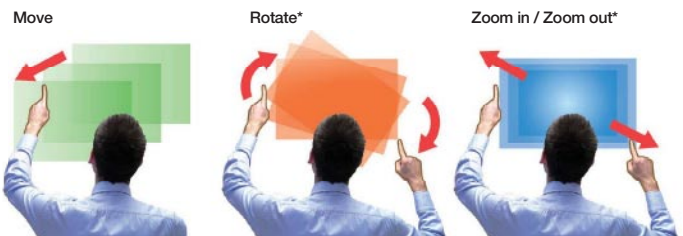
*The elite Panaboard may not react to fingernails, gloved hands, etc.



Multi-touch Operation

Dynamic Image Control

Images can be easily moved, scaled and rotated with your fingers. This kind of free image manipulation will also keep students from getting bored.



*When using Windows 7 and applications that support Multi-touch.

with the elite Panaboard!

Simultaneous Operation by Up to Three Students

Get Your Students Involved

Because up to three points can be simultaneously operated, a team of three students can work together on the same task. For example, three students can work together on a math problem.



*The photograph is simulated. In actual use, the projector may cast the user's shadow onto the board.

*When three users operate the board simultaneously, operating restrictions may exist depending on the application.

Built-in Stereo Speakers

Play Videos Complete with Sound

The elite Panaboard's built-in stereo speakers offer the versatility to share audio with your class. Videos with sound and the use of sound effects help to attract the students' attention and make your lessons more effective.



Wireless Functions*

Easy Remote Control

With the optional Wireless Kit, there is no need for a cable to connect the computer and the board. This also allows more flexible classroom layouts.

*When using a large amount of data, like when playing motion images with audio, the sound or display may be interrupted.



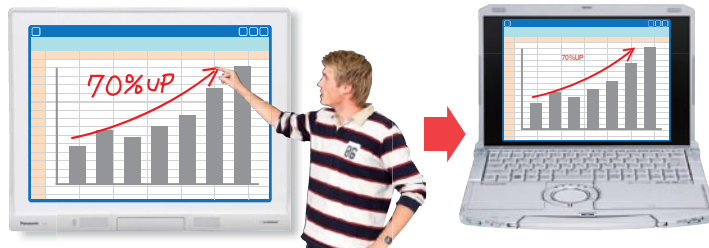
Ink Note

Easily Save Information Written on the Board

You can insert images and text into Microsoft® Word, Excel®, or PowerPoint® using elite Panaboard Software.

For More Info

Click Here --->



Data

Multifunctional Electronic Pen

Streamline Your Lessons

You can use the Electronic Pen to switch between four marker colors and the eraser tool, and do things like remotely turn PowerPoint® pages. This helps to keep the students' attention because you don't need to stop the flow of the lesson.



Status LED

Remote Control Button x 2 (Up/Down Button)

Menu Button

Penpoint

Selector Dial

- 4-Color marker
- 3-Color highlighter
- Eraser
- Low Power mode

*The up and down buttons can be used in a range of approximately 30 ft. from the elite Panaboard (without obstructions).

2 USB Hub Ports

Make Your Lessons More Effective

The elite Panaboard is equipped with two additional USB ports. This allows you to connect additional devices to enhance your lessons, such as a desktop info camera, a web microscope, or even a printer, without using up the necessary resources in your PC.



elite Panaboard Software

Panaboard has a wide range of tools, ranging from basic pens and erasers to special-effect functions, that make class more exciting and enjoyable.

Drawing Menu

This is a selection of drawing tools, such as pens and erasers.



< Colorful Pen >



Select Function Menu

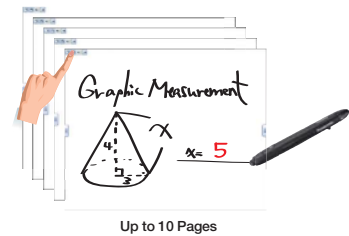
In addition to drawing tools, Panaboard has a variety of special-effect functions that attract students' attention, as well as recording functions.



Multi-page White Background

Write or Draw More Information

The software includes a total of ten white backgrounds. When you want to move on to another subject during the class, you can just start writing the new information on another white background, without having to erase the previous information.

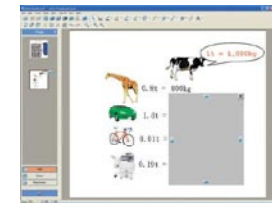


Up to 10 Pages

Screen Shade

Diverse Applications

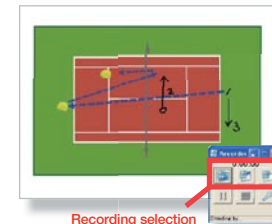
The sliding shade can conceal a part of the screen or the entire display. One typical use is to cover up the answer or explanation while students try to answer a question or solve a problem.



Recorder

Saving Lessons as Motion Images

With this function, you can record the entire screen or any part of it that you designate. It is convenient for recording lessons for later review. If you connect a microphone to the PC, you can also record voices simultaneously.



Recording selection

Other Main Functions

- Capture
- Magnifier
- Print
- Slide Show
- Spotlight
- Text Recognition
- On-Screen Keyboard
- Shape Recognition
- Application Launcher*

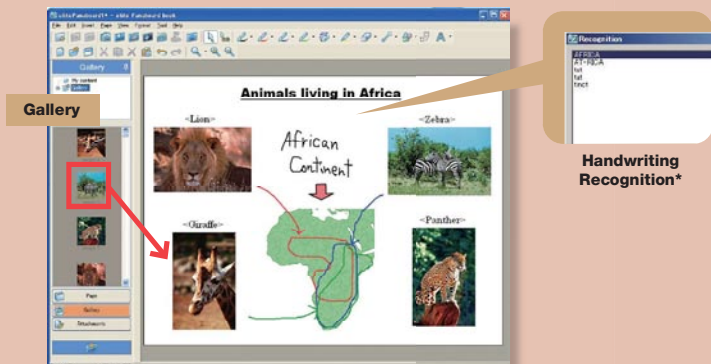
*Desktop Info Camera, Voting System, Teleconference System

elite Panaboard book

-- Software for Creating Class Materials

This contains Panasonic tools for creating and editing teaching materials. The variety of tools provided includes virtually everything you need to produce creative materials.

*An additional application is required for this function. For detailed information, please visit <http://panasonic.net/pcc/support/eboard/elite/download.html> *Some languages and characters may not be correctly recognized.



Enhance Your Lessons with elite Panaboard!

Putting the Internet to Work in Social Studies

I'm able to instantly show maps and photos of famous people and historical data on the elite Panaboard by simply connecting my PC to the Internet. This helps to hold the students' interest from start to finish.

For More Info

Click Here --->



Using Spreadsheets for Math Lessons

I can display all kinds of graphs on the elite Panaboard and instantly change them by simply changing the numbers in the spreadsheet. This makes it easy for the students to understand the relationships between the graphs and the numbers, so they can actively participate in the lesson.



Easy-to-Understand Biology Lessons Using Motion Images

I showed a video clip of some animals and plants that I had previously recorded, and explained them to my students. With both screen images and speaker sound, the elite Panaboard keeps the kids interested and greatly improves their level of understanding.



UB-T880W / UB-T880 Specifications

Product Specifications			
Main Body ¹	Power	AC 100 – 240 V, 50/60 Hz	
	Power Consumption	During Operation: 0.5 A (When power is OFF by the power switch: 0.2 W)	
	Operating Environment	Temperature: 50 – 95°F (10 – 35°C), Humidity: 30 – 80 %	
	External Dimensions (Height x Width x Depth)	UB-T880W	52.00 x 74.81 x 4.63 in. (1,320 x 1,900 x 117 mm)
		UB-T880	52.00 x 65.25 x 4.63 in. (1,320 x 1,657 x 117 mm)
	Screen Board Size (Height x Width)	UB-T880W	46.25 x 72.63 in. (1,175 x 1,845 mm)
		UB-T880	46.25 x 63.06 in. (1,175 x 1,602 mm)
	Effective Area (Height x Width)	UB-T880W	40.75 x 72.50 in. (1,036 x 1,842 mm) (83-inch, diagonal)
		UB-T880	46.25 x 61.69 in. (1,175 x 1,567 mm) (77-inch, diagonal)
	Weight (without stand)	UB-T880W	86 lbs (39.0 kg)
UB-T880		79.4 lbs (36.0 kg)	
Panel Surface	Melamine Coated Hardboard		
Position Sensor	Capacitance Type Touch Sensor		
Pen Pocket	Put Electronic Pen away in the Pen Pocket (Maximum 4 Pens)		
Interactive Functions	Interface	USB 2.0 B Type 1 port (for PC) USB 2.0 A Type 2 ports HUB (for USB Peripheral Devices)	
	Audio Features	Audio Input Input Level: 309 mVrms (1 kHz, 0 dB, 10 kΩ) Stereo 1 system, φ 1/8 in. (3.5 mm) stereo mini jack	
	Audio Output	2 W + 2 W (Max. 4 W + 4 W)	

Electronic Pen	Transmission System	GFSK
	Electronic Pen Power	LR03 (AAA alkaline dry cell battery) x 1
	Electronic Pen	30 hours (when used continuously at 77°F [25°C]) * When using Panasonic LR03 alkaline dry-cell batteries.
Accessories	Battery Life	
	Operating Instructions	x 1, Power Cord (9 ft. 10 1/8 in.) x 1, Electronic Pen x 1, Battery (LR03 AAA alkaline battery) x 1, USB Cable (16 ft. 4 7/8 in.) x 1, Software DVD-ROM x 1, Penpoint (Replacement) x 1, Wall Mounting Plate (Left, Right) x Total 2
	Optional Devices	Stand [KX-B061], Electronic Pen [UE-608026] ² , Wireless Kit [UE-608040]
	elite Panaboard Software Specifications	
System Requirements	Computer	IBM® PC/A1 compatible with a DVD-ROM drive, Web browser
	CPU	Intel® Pentium® 4 processor or later
	Interface	USB 2.0
	Operating System	Windows XP SP3 or later / Windows Vista SP2 or later / Windows 7 ³ (Windows XP 64-bit edition is not supported.)
	Memory	1 GB or more
	Hard Disk	At least 700 MB free space (except saving space for data file) ⁴

¹ Dimensions and weights are approximate.
² Two or more Electronic Pens cannot be used simultaneously.
³ Windows® 7 Starter and Windows® 7 Home Basic are not supported.
⁴ An additional 700 MB may be required when installing .NET Framework.

Design and specifications are subject to change without notice.

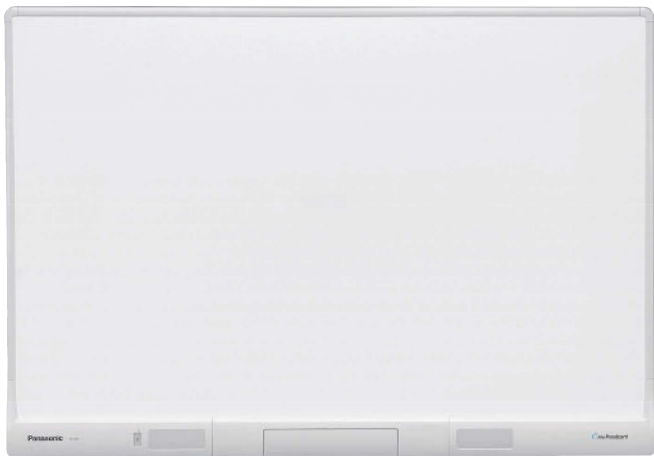
Microsoft® Windows®, Windows Vista®, PowerPoint®, Excel® and the Windows logo are either registered trademarks or trademarks of Microsoft Corporation in the United States and/or other countries. IBM® is a trademark of International Business Machines Corporation in the United States, other countries, or both. Intel® and Pentium are trademarks of Intel Corporation in the U.S. and other countries. All other product/brand names, trademarks or registered trademarks identified herein are the property of their respective owners.

To run the elite Panaboard software, Microsoft .NET Framework 3.0 SP2, or later and DirectX 7.0 or later are required. When you install the elite Panaboard software from the DVD-ROM, .NET Framework 3.5 SP1 will be installed on your computer if it is not already installed. The system requirements above do not meet the recommended specifications of all operating systems. You must have Windows Media® Player 11 or later, or Adobe® Flash® Player 10 or later installed in order to insert and play back movies. The handwriting and shape recognition features are supported in Windows Vista Ultimate, Windows Vista Home Premium, Windows Vista Business, Windows 7 Ultimate, Windows 7 Professional, Windows 7 Home Premium and Windows XP Tablet PC Edition 2005. For users of Windows XP Professional: To use the handwriting and shape recognition features, you must install the Tablet PC SDK and Microsoft Windows XP Tablet PC Edition 2005 Recognizer Pack. The handwriting and shape recognition features are not supported in Windows Vista Home Basic, or Windows XP Home Edition. You must have enough available hard disk space in order to record and play back movies. The ability to import drawing data from other applications, and the ability to save a slide's drawing data to a PowerPoint file are available in Office XP, Office 2003, and Office 2007.

Limits to Simultaneous Operation

-The UB-T880 series can detect up to 3 spots at the same time. Touching more than 3 spots at the same time can result in erroneous operation.

For detailed information, please access the following URL: <http://panasonic.net/pcc/support/eboard/elite/download.html>



UB-T880W



UB-T880

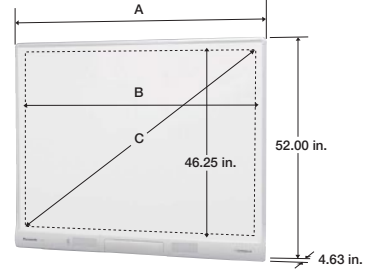
System



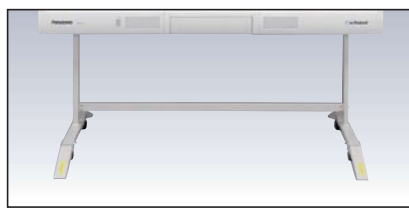
The UB-T880W/UB-T880 does not include a PC and projector.

Dimensions (UB-T880W / UB-T880)

	UB-T880W	UB-T880
A	74.81 in.	65.25 in.
B	72.63 in.	63.06 in.
C	83-inch	77-inch
	16:9	4:3



Options



Stand (KX-B061) *

* The height of the stand can be adjusted in 4 steps during installation. Its height cannot be adjusted during use.
 4 steps : 81.9 in. (2,080 mm)
 78.0 in. (1,980 mm)
 74.0 in. (1,880 mm)
 70.0 in. (1,780 mm)



Electronic Pen (UE-608026)



Wireless Kit (UE-608040)



Panasonic System Networks Company of America
 Three Panasonic Way, Secaucus, NJ 07094
 For more information or to find a local dealer,
 visit panasonic.com/whiteboard

For More Info 
 Click Here --->